



Every Child Ready

2024 IMPACT REPORT

Empowering Teachers | Transforming Classrooms | Supporting Children

AppleTree Institute for Education Innovation is a nonprofit organization committed to increasing access to high-quality early learning experiences. AppleTree does this through Every Child Ready, our comprehensive instructional model for prekindergarten classrooms. Every Child Ready includes curriculum, professional learning, and measurement and reporting, providing schools with everything they need to prepare their pre-K children to thrive.

School Year 2023-2024



During the 2023-2024 school year, over 600 educators used ECR to teach approximately 3,500 students in Washington, DC, Missouri, New York, and Texas. Additional states will be added during 2024-2025. Together, we are transforming classrooms and equipping teachers with the tools, skills, and support needed to ensure every child is ready to succeed.



During the school year 2023-2024, Every Child Ready provided over 4,000 hours of dedicated support to educators and classrooms nationwide. Eighty percent of that time was spent working directly with teachers in their classrooms, fostering growth and improving practice where it matters most.



Over 400 educators attended Every Child Ready summer trainings. Eighty-eight percent of participants were satisfied or very satisfied with the training, with 82 percent of participants feeling confident they would implement what they learned into their teaching practice.

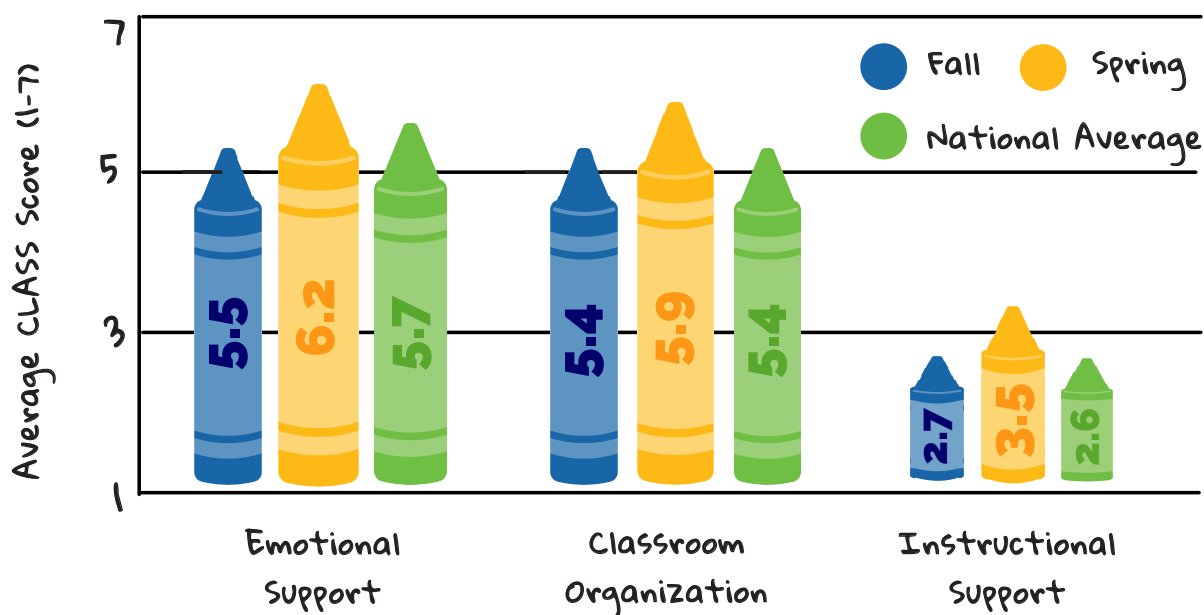
Every Child Ready prioritizes high-quality, accessible professional learning opportunities for all educators. Recognizing the importance of customizing professional learning offerings to the needs of individual schools, we provided:

- A library of over 20 on-demand, IACET-approved professional learning courses.
- Over 30 live professional learning seminars designed for trainers to create dynamic and collaborative learning environments.
- Over 150 practical guides and resources tailored to the needs of teachers and classrooms.
- Over 550 educators were served by ECR trainings.



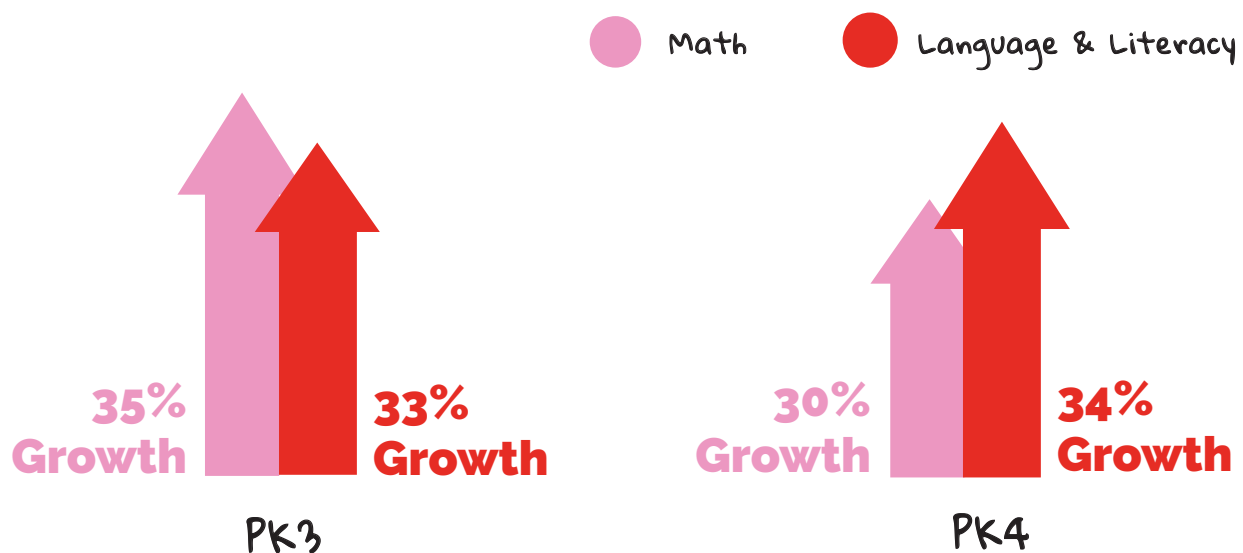
The Classroom Assessment Scoring Tool (CLASS) is a nationally-recognized tool that measures the quality of teacher-child interactions. End of the year CLASS scores for a subset of Every Child Ready classrooms were 6.24 in Emotional Support, 5.87 in Classroom Organization, and 3.45 in Instructional Support. Scores in these ranges have been positively associated with children's long term academic and social-emotional learning outcomes.

Average CLASS Score Fall to Spring



Our mission to ensure every child has access to a high-quality learning environment is evident in the measurable improvements seen across the classrooms we support. These scores indicate that Every Child Ready classrooms, on average, outperformed national averages in all three domains. Most importantly, these scores showed meaningful growth from the beginning to the end of the year, highlighting the positive benefits of participating in the Every Child Ready program.

The ultimate goal of Every Child Ready is to positively impact children. During the school year 2023–2024 children in Every Child Ready classrooms made significant positive improvements in math, language and literacy, and social-emotional learning. On average, PK3 children grew 35% in math and 33% in language and literacy. PK3 children also saw an average increase from 2.8 (often demonstrates positive behaviors) to 3.8 (almost always demonstrates positive behaviors) on the Positive Behavior Rating Scale, a 5-point teacher rating scale of children's positive social-emotional behaviors. PK4 children grew 30% in math and 34% in language and literacy. PK4 children saw an average increase from 3.1 (often demonstrates positive behaviors) to 4.0 (almost always demonstrates positive behaviors) on the Positive Behavior Rating Scale. These scores meet or exceed benchmarks, indicating children are prepared to enter Kindergarten ready to succeed.



Children also made meaningful gains in alphabet knowledge. On average, PK3 children learned 18 new letters and 19 new letter sounds. PK4 children learned 17 new letters and 25 new letter sounds.

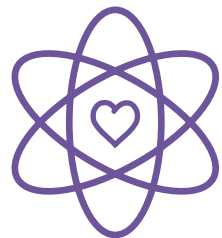


Compared to children who were new to Every Child Ready in PK4, returning PK4 children scored 8% higher in language and literacy and 4% higher in math at the end of their PK4 year. New and returning children ended their PK4 year with similar ratings in social-emotional learning. PK4 children with two years of Every Child Ready instruction knew, on average, four more letters and five more letter sounds at the end of PK4 compared to children with one year of Every Child Ready instruction.

Implementation at Scale

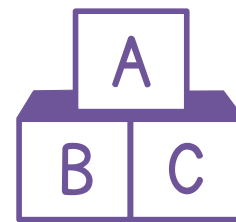
Every Child Ready scaled into four states, with more added for the 2024–2025 school year. We were also approved for use or in the process of approval in a total of **12 states**. Schools that use Every Child Ready implementation have access to a suite of fidelity tools, coaching resources, and Every Child Ready specialists to support implementation in person or virtually. These supports are reflected in the coaching hours and adult-facing resources outlined above.

Fidelity to the instructional model is essential to educator and student success. It is grouped into three categories: 1) environmental quality; 2) Every Child Ready daily instructional components; and 3) utilization and application of best practices in early childhood teaching and learning.



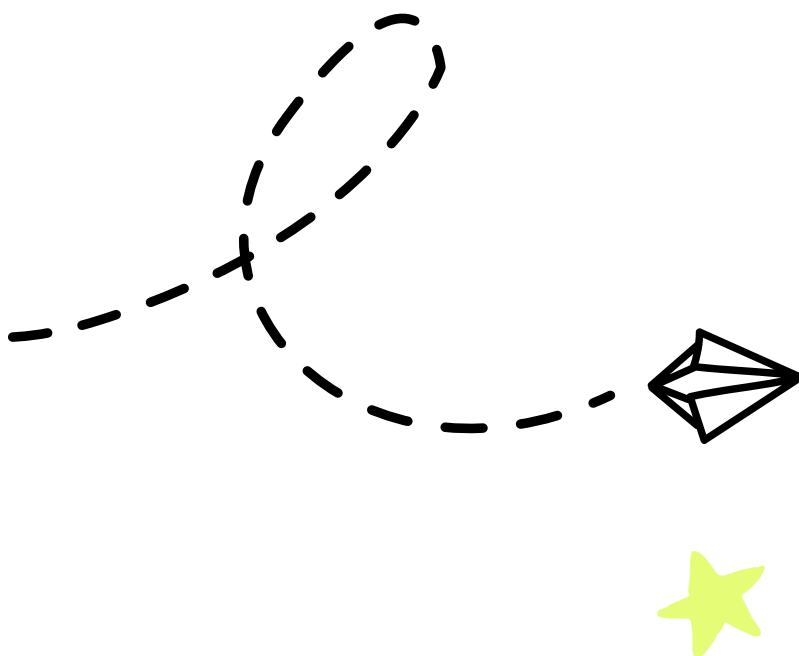
2,000+

Over 2,000 fidelity checks were conducted across the Every Child Ready network.



80%

By the end of the year, over 80% of classrooms met fidelity expectations for classroom environment, Every Child Ready components, and best practices.



Additional Highlights

Every Child Ready launched a new, integrated technology platform where teachers can access curriculum content, professional learning resources, assessments, and reporting. As part of this integration, Every Child Ready provides an integrated gradebook and dynamic Tableau reporting.

This allows teachers to access content, enter data, and view actionable reporting all in one place.

Small Groups | Gradebooks

Language & Literacy Gradebook

Manage Groups Add Student +

Group A Group C Group B Group D

	Apple Student	Howard Student	Georgia Student	Daria Student	Bobby Student	Zoey Student
Receptive Language	✓	—	✓	✓	—	—
Expressive Language	—	✓	—	✓	✓	—
Print Awareness	—	—	—	—	✓	—
Compound Words	—	✓	✓	✓	✓	✓
LL-PA.1.AA Word Awareness	Apple S. 1 of 5 complete	Howard S. 1 of 5 complete	Georgia S. 1 of 5 complete	Daria S. 1 of 5 complete	Bobby S. 1 of 5 complete	Zoey S. 1 of 5 complete
LL-PA.1.A Repeats Compound Words	Apple S. 1 of 5 complete	Howard S. 1 of 5 complete	Georgia S. 1 of 5 complete	Daria S. 1 of 5 complete	Bobby S. 1 of 5 complete	Zoey S. 1 of 5 complete
Introduction to Compound Words	D v	D v	D v	D v	— v	D v
Pancake and Snowball - Repeating Compound Words	ND v	P v	P v	ND v	ND v	ND v

Curriculum-Aligned Predictors of Kindergarten Readiness

Assessing student learning is critical to the Every Child Ready model. To ensure academic growth is accurately measured, AppleTree validated two revised formal assessments: Every Child Ready: Math and Every Child Ready: Language & Literacy. They were validated using the Woodcock-Johnson IV Test of Achievement. These valid and reliable tools are tightly aligned to an evidence-based developmental trajectory of learning. This alignment allows teachers to use assessment results for both summative and formative purposes. Although these tools are curriculum agnostic, they also fit into Every Child Ready's integrated platform and data system, allowing teachers to easily translate these results into action to support all children through multitiered systems of support.